

# MONTHLY MEMBERSHIP PROGRESS REPORT

LOCATION INDIA

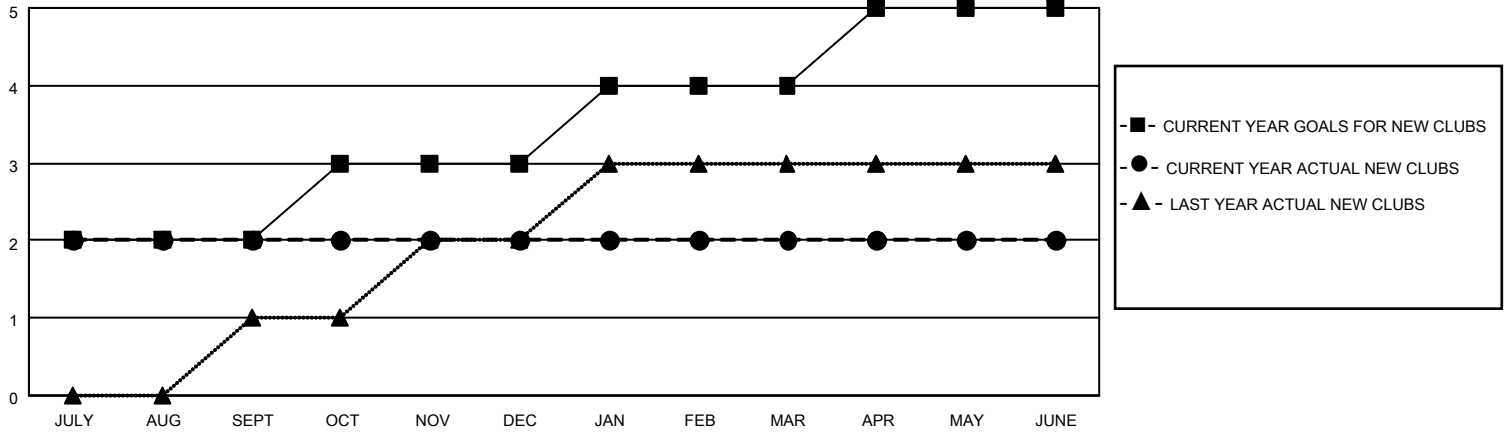
District 316 B

Results as of: 6/30/2021

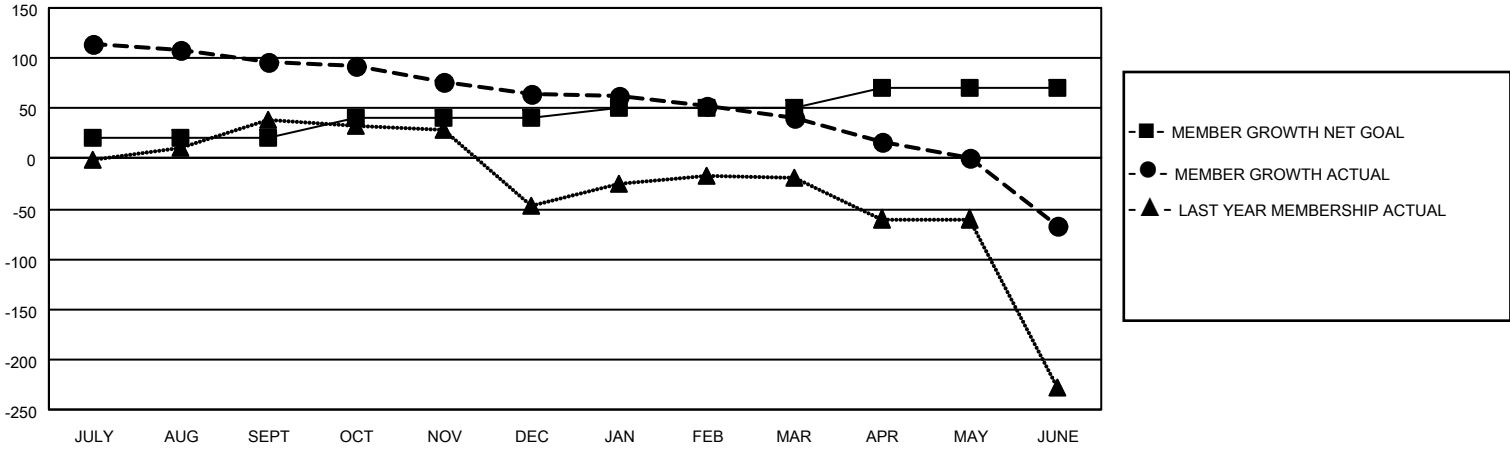
Clubs			
RESULTS FOR 2020-2021			
QUARTER	NEW CLUB GOAL	NEW CLUBS	DROPPED CLUBS
JULY/AUG/SEPT	2	2	0
OCT/NOV/DEC	1	0	0
JAN/FEB/MAR	1	0	4
APR/MAY/JUNE	1	0	1

Members			
RESULTS FOR 2020-2021			
QUARTER	MEMBER GROWTH NET GOAL	MEMBER GROWTH ACTUAL	DROPPED MEMBERS ACTUAL (including transfers)
JULY/AUG/SEPT	20	129	29
OCT/NOV/DEC	20	36	65
JAN/FEB/MAR	10	10	31
APR/MAY/JUNE	20	90	180

**GOALS AND ACTUAL NEW CLUBS CUMULATIVE**



**GOALS AND ACTUAL MEMBERS CUMULATIVE**



**DROPPED CLUBS: 5**

31 CLUBS OF 61 ADDED 1 OR MORE NEW MEMBERS

**GENDER DISTRIBUTION**

MALE 1,170 (75.78%)  
FEMALE 374 (24.22%)

**DROPPED MEMBERS**

DECEASED	38
CLUB CANCELLED	16
OTHER	250
<b>TOTAL</b>	<b>304</b>

[CLICK HERE FOR CUMULATIVE MEMBERSHIP DATA](#)

TOTAL FAMILY UNIT MEMBERS	490
FAMILY MEMBERS PAYING HALF DUES	284